

2012-2013



PRODUCT RANGE

Offer and solutions

CHILLERS • HEAT PUMPS • FAN COIL UNITS •
TERMINAL UNITS • AIR HANDLING





A complete offer for HVAC specialists

Rhoss's offer is targeted towards specialists in the HVAC world.

Rhoss technicians and engineers are constantly engaged in developing air conditioning, heating and air handling products and systems for applications such as residential, offices, hotels and hospitality structures in general, hospitals, airports and industry.

For each of these applications, Rhoss's solution is targeted towards improving energy efficiency, environmental comfort and air handling processes. For this reason, Rhoss products and systems are divided into four well focused catalogues.



APPLIED SYSTEMS

Chillers, fan coil units and terminal units for public, commercial and industrial applications, for small and large systems.



HEAT PUMPS

Heat pumps and heating, cooling and hot water production solutions specifically for residential and small service industry applications.



AIR HANDLING SYSTEMS

Air handling units for public, commercial and industrial uses. Dehumidifiers for indoor pools.



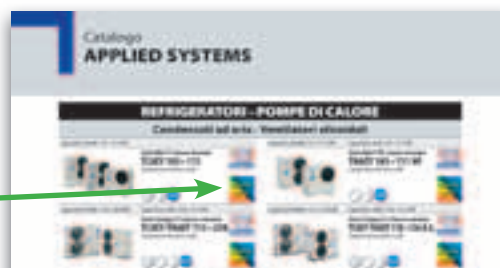
RADIANT SYSTEMS

Radiant air conditioning systems that integrate floor, wall and ceiling terminals with chillers/heat pumps, air handling units and complete system regulation. The offered solutions are specific for residential, commercial and large building applications.

Sustainable RHOSS technology is recognisable

Rhoss offers solutions that promote sustainable construction in terms of energy efficiency, in line with the requirements of modern Green-Buildings. These are products or systems that were designed with technology that makes it concretely possible to reduce the energy needs of the HVAC system, but without reducing the comfort in the building where it is installed. The Rhoss solutions that excel in sustainability can be easily recognised by the Green Line mark, which represents Rhoss's respect for the environment.

How to recognise the Green-Line



Catalogue

AIR HANDLING SYSTEMS

COMFORT

Terminal units, heat recovery units and air handling units, standardized and designed for plant engineering solutions in the services sector and offices in general, in schools, hospitality and commercial buildings.



UTNB
Ductable terminal air handling units in sections
Air flow rate: 850÷1680 m³/h
Cooling capacity: 4,1÷10,5 kW
Heating capacity: 5,9÷13,6 kW

Web code:
UTB1



UTNA
Ductable terminal air handling units in sections
Air flow rate: 1800-16500 m³/h
Cooling capacity: 7,2-108 kW
10,5÷128,7 kW - Heating capacity:

Web code:
UTA1



UTNV
Vertical air conditioning and thermal ventilation terminal units.
Air flow rate: 1600÷28000 m³/h
Cooling capacity: 7,4÷123,6 kW
Heating capacity: 12,4÷195,2 kW

Web code:
UTNV



UTNR-A and UTNR-P
Fresh air terminal units with crossed flows static heat recovery
Air flow rate: 300÷3920 m³/h

Web code:
UTNR



UTNR-HE
Fresh air terminal units with rotary heat recovery
Air flow rate: 310÷4290 m³/h

Web code:
UTNR



VMC-E
Fresh air terminal units with countercurrent flows static heat recovery
Air flow rate: 150÷1000 m³/h

Web code:
UTNR



MODULART
Air handling units
Air flow rate: 1350÷28350 m³/h

Web code:
CTMO

PROFESSIONAL

Air handling units, advanced heat recovery units, dehumidification and thermohygroscopic parameter control solutions in commercial, hospitality and hospital facilities and all situations in general for which maximum performance is sought with the minimum system operational and management costs.



CTA ADV
Air handling units
Air flow rate: 850÷104970 m³/h



Web code:
CTCT



DAESY-DRESY-DTESY-DEESY
Pool dehumidifiers
Dehumidification capacity: 8÷140 l/h

Web code:
DRP1 / DRP2

INDUSTRY

Industrial products and services. A package of solutions for the agro-food sector; pharmaceutical and hospital industry; furniture and painting systems industry; shipping industry; energy recovery engineering and solutions for large volumes of air.



WATER CHILLERS - HEAT PUMPS

Air-cooled - Axial fans

<p>Heating capacity: 4,5÷15,9 kW</p>  <p>Mini-Y Revolution Range THAIY 104÷115 Brushless DC rotary inverter hermetic compressors</p> <p>R410A NF Web code: MYRE</p> 	<p>Cooling capacity: 5,5÷11,1 kW</p>  <p>Low consumption Mini-Y Range TCAEY 105÷111 Hermetic Scroll compressors</p> <p>R410A Web code: COMY</p> 
<p>Heating capacity: 5,8÷11,9 kW</p>  <p>Low consumption Mini-Y NF Range THAEY 105÷111 NF Hermetic Scroll compressors</p> <p>R410A Web code: MYNF</p> 	<p>Heating capacity: 16,8÷30,7 kW</p>  <p>Low consumption Compact-Y NF Range THAEY 115÷127 NF Hermetic Scroll compressors</p> <p>R410A NF Web code: CYNF</p> 
<p>Heating capacity: 8,7÷19,1 kW</p>  <p>Low consumption Compact HT Range THAE 110÷119 H.T. Hermetic Scroll compressors</p> <p>R407C Web code: COC1</p> 	<p>Cooling capacity: 15,4÷38,8 kW</p>  <p>Low consumption Compact-Y Range TCAEY-THAEY 115÷238 Hermetic Scroll compressors</p> <p>R410A Web code: COCY</p> 
<p>Cooling capacity: 44,2÷64 kW</p>  <p>Low consumption Compact-Y Range TCAEY-THAEY 245÷265 Hermetic Scroll compressors</p> <p>R410A Web code: C1CY</p> 	<p>Cooling capacity: 23,8÷48,5 kW</p>  <p>Y-M.I.C.H. Range TCAIY-THAIY 124-150 Hermetic Scroll compressors Inverter</p> <p>R410A Web code: CYMI</p> 
<p>Cooling capacity: 67÷161 kW</p>  <p>Low consumption Y-Pack Range TCAEY-THAEY 270÷2160 Hermetic Scroll compressors</p> <p>R410A Web code: C2Y1</p> 	<p>Cooling capacity: 145÷337 kW</p>  <p>Low consumption Y-Pack EVO Range TCAEY-THAEY 4160÷4320 Hermetic Scroll compressors</p> <p>R410A Web code: C2Y2</p> 
<p>Cooling capacity: 170-361 kW</p>  <p>Y-Pack FREE-COOLING Range TFAEY-TGAEY 4160÷4320 Hermetic Scroll compressors</p> <p>R410A Web code: FREE</p> 	<p>Cooling capacity: 335÷661 kW</p>  <p>Low consumption Y-Power Range TCAEY-THAEY 4370÷6660 TCAEY-THAEY 4350÷6640 Hermetic Scroll compressors</p> <p>R410A Web code: C3Y1 C3Y2</p> 
<p>Cooling capacity: 260÷1602 kW</p>  <p>Z-Power Range TCAVZ 1270÷1390 TCAVZ 2331÷2701 TCAVZ 2710÷21600 Semi-hermetic screw compressors</p> <p>R134a Web code: C3Z1 C4Z1 C3Z2</p> 	<p>Cooling capacity: 324,8÷1283,4 kW</p>  <p>Z-Power Range TCAVZ 2330÷2700 H.E. TCAVZ 2770÷21290 H.E. Semi-hermetic screw compressors</p> <p>R134a Web code: C5Z1 C4Z2</p> 
<p>Cooling capacity: 316÷1210 kW</p>  <p>Z-Power Range TCAVQZ 2330÷21290 H.E. Semi-hermetic screw compressors</p> <p>R134a Web code: C5Z1 C4Z2</p> 	<p>Cooling capacity: 516÷1032 kW</p>  <p>Z-Power VFD Range TCAIIZ 2520÷21030 Semi-hermetic screw compressors with variable Vi, inverter</p> <p>R134a Web code: C3ZI</p> 



COOLING ONLY



HEAT PUMP



OUTDOOR INSTALLATION



INDOOR INSTALLATION

Cooling capacity: 384÷680 kW

Heating capacity: 409÷700 kW



Z-Power Range
THAVZ 2400÷2680
Semi-hermetic screw compressors

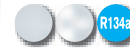


Web code:
C5Z2

Cooling capacity: 250÷1280 kW



T-Power Range
TCATBZ 1250-2800
TCATTZ 1260-41280 H.E.
Oil-free centrifugal compressors



Web code:
TPW1
TPW2



Air-cooled - Centrifugal fans

Cooling capacity: 4,8÷10,4 kW

Heating capacity: 5÷11 kW



Low consumption Mini-Y Range
TCCEY-THCEY 105÷111
Hermetic Scroll compressors



IDRHOSS system compatible



Web code:
MYCE



Cooling capacity: 13,5÷22 kW

Heating capacity: 13,6÷24 kW



Compact Range
TCCE-THCE 114÷126
Hermetic Scroll compressors



IDRHOSS system compatible



Web code:
COCE

Cooling capacity: 30,1÷66,3 kW

Heating capacity: 34,9÷77,1 kW



TCCE-TCPE-THCE-THPE
130÷270
Hermetic Scroll compressors



Web code:
C2CT

Cooling capacity: 32÷161 kW

Heating capacity: 37÷175 kW



Low consumption Y-Pack C-PF Range
TCCEY-THCEY
233÷2160
Hermetic Scroll compressors



IDRHOSS system compatible



Web code:
YPCE



Water-cooled - Condenserless units

Cooling capacity: 5,4÷12 kW

Heating capacity: 6,5÷13,9 kW



Low consumption Comby-Flow Range
TCHEY-THHEY 105÷112
Hermetic Scroll compressors



IDRHOSS system compatible



Web code:
C5CF



Cooling capacity: 45,2÷450,8 kW

Heating capacity: 50÷512,7 kW



Low consumption Y-Flow Range
TCHEY-THHEY 245÷4450
Hermetic Scroll compressors



IDRHOSS system compatible



Web code:
YFL2
YFL3



Cooling capacity: 15,5÷41,9 kW

Heating capacity: 17,4÷44,9 kW



Low consumption Y-Flow Range
TCHEY-THHEY 115÷240
Hermetic Scroll compressors



IDRHOSS system compatible



Web code:
YFL1



Cooling capacity: 199,7÷1629,2 kW

Z-Flow Range

TCHVZ 1200÷31630
Semi-hermetic screw compressors



Web code:
C1FZ
C2FZ



Cooling capacity: 5,5-249 kW

Mini-Q Flow E Range (mod. 105-115)

Compact Flow E Range (mod. 120-165)
Q-Flow E Range (mod. 280-4260)
TCEE 105÷4260
Hermetic Scroll compressors



Web code:
C1FS



Cooling capacity: 171,9-1424,8 kW

Z-Flow E Range

TCEVZ 1200÷31630
Semi-hermetic screw compressors



Web code:
C1FE
C2FE



Industrial & process cooling - Wine Line

Cooling capacity: 15,4÷161,9 kW

Industrial & Process Cooling Range

TCAEY 118÷2189
Hermetic Scroll compressors



IDRHOSS system compatible



Web code:
C2CQ
C3CQ



EXP - Polyvalent systems



Cooling capacity: 17,4÷34 kW Heating capacity: 17,9÷39,1 kW



Compact-Y EXP Range
TXAEY 117÷133
Hermetic Scroll compressors



Web code:
C2Q6



Cooling capacity: 42,6÷61,9 kW Heating capacity: 47,8÷67,9 kW



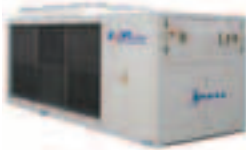
Compact-Y EXP Range
TXAEY 245÷265
Hermetic Scroll compressors



Web code:
C2Q7



Cooling capacity: 81÷334 kW Heating capacity: 84÷353 kW



Y-Pack EXP Range
TXAEY 280÷4320
Hermetic Scroll compressors



Web code:
C2Q0



Cooling capacity: 408÷698 kW Heating capacity: 413÷707 kW



Z-Power EXP Range
TXAVZ 2420÷2700
Semi-hermetic screw compressors



Web code:
C2Q9



Cooling capacity: 5,4÷12 kW Heating capacity: 6,5÷14,5 kW



Comby-Flow EXP Range
TXHEY 105÷112
Hermetic Scroll compressors



Web code:
C2Q4



Cooling capacity: 434÷782 kW Heating capacity: 482÷878 kW



Z-Flow EXP Range
TXHVZ 2410÷2740
Semi-hermetic screw compressors



Web code:
C2Q5



Condensing units

Cooling capacity: 7,6÷26,3 kW Heating capacity: 9÷29,9 kW



MCAE-MHAE 108÷127
Hermetic Scroll compressors



Web code:
COMC

Cooling capacity: 30,5-181,1 kW



MCAE 131÷2181
Hermetic Scroll compressors



Web code:
C2MC

SYSTEM ACCESSORIES

Remote condensers



CCAM 105÷2130
Axial fans



Web code:
AUCR

Cooling towers



CEHV CEHP 46÷2791
Axial fans



Web code:
CIV1

Pumping groups



AS 0300÷2500

Web code:
CIV2

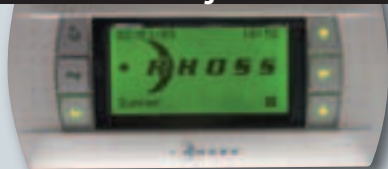
Cooling capacity: 50,2÷249 kW



Pumping groups
PBHI 0200-0400

Web code:
CIV3

RHOSS SEQUENCER
Water chiller management software



RHOSS SUPERVISOR
Rhoss supervision software



FAN COIL UNITS - TERMINAL UNITS

Cooling capacity: 1,9÷3,9 kW Heating capacity: 2,8÷5,4 kW



IDROWALL
Wall mounted fan coils

Web code:
WVID

Cooling capacity: 1÷7,6 kW Heating capacity: 1,3÷10,5 kW



BRIO-EV
Floor and ceiling fan coil units



Web code:
WVB1

Cooling capacity: 1÷7,9 kW Heating capacity: 1,4÷11,1 kW

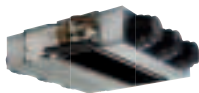


YARDY-EV
Floor and ceiling fan coil units



Web code:
WVYE

Cooling capacity: 2÷5 kW Heating capacity: 2,4÷6,8 kW



YARDY-DUCT
Ductable fan coil units for recessed horizontal or vertical installation
Air flow rate: 275÷940m³/h



Web code:
WVYD

Cooling capacity: 2,4÷9,6 kW Heating capacity: 3,2÷13 kW

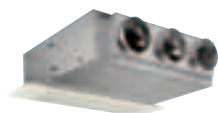


UTNC-EV
Cassette-type fan coil units



Web code:
UTTC

Cooling capacity: 4,1÷10,5 kW Heating capacity: 5,9÷13,6 kW



UTNB
Ductable terminal air handling units in sections
Air flow rate: 850÷1,680 m³/h



Web code:
UTB1

Air flow rate: 300÷3920 m³/h

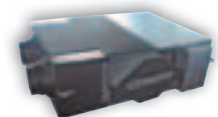


UTNR-A and UTNR-P
Fresh air terminal units with crossed flows static heat recovery



Web code:
UTNR

Air flow rate: 150÷1000 m³/h



VMC-E
Fresh air terminal units with countercurrent flows static heat recovery



Web code:
UTNR

Cooling capacity: 1,9÷8 kW Heating capacity: 2,5÷11,2 kW



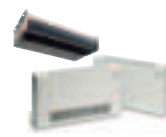
BRIO-I
Floor and ceiling fan coil units with brushless motor



Web code:
WVBI



Cooling capacity: 1,9÷8 kW Heating capacity: 2,5÷11,2 kW



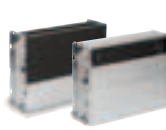
YARDY-I
Floor and ceiling, recessed or false ceiling fan coil units with brushless motor



Web code:
WVYI



Cooling capacity: 1÷7,9 kW Heating capacity: 1,4÷11,1 kW



YARDY-EV
Recessed or false ceiling fan coil units



Web code:
WVYE

Cooling capacity: 7,2÷20,5 kW Heating capacity: 9,6÷28 kW



YARDY-HP
Ductable fan coil units for recessed horizontal or vertical installation
Air flow rate: 1,550÷3,875 m³/h



Web code:
WVY2

Cooling capacity: 2,5÷7,8 kW Heating capacity: 3,7÷11,1 kW



VTNC
Cassette-type fan coil units

Web code:
VTNC

Cooling capacity: 7,2-108 kW Heating capacity: 10,5÷128,7 kW



UTNA
Ductable terminal air handling units in sections
Air flow rate: 1,800-16,500 m³/h



Web code:
UTA1

Air flow rate: 310÷4910 m³/h



UTNR-HE
Fresh air terminal units with rotary heat recovery



Web code:
UTNR

CONTROLS for fan coil units and terminal units

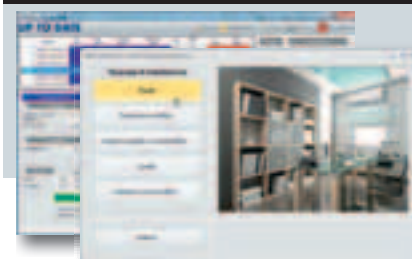


Web code:
WAWR

iDRHOSS
Integrated solutions for system management

iDRHOSS
HYDRONIC COMFORT SOLUTIONS

UP TO DATE
Selection software for Chillers and Fan Coils



Air cooled reversible heat pumps

Heating capacity: 4,5÷15,9 kW



**Mini-Y Revolution range
THAIY 104÷115**
DC brushless rotary inverter
hermetic compressors

Web code: **MYRE**



Heating capacity: 16,8÷30,7 kW



**Low consumption Compact-Y NF range
THAIY 115÷127 NF**
Hermetic Scroll compressors

Web code: **CYNF**



Heating capacity: 27,3÷54,3kW



**Y-M.I.C.H. Range
THAIY 124-150**
Hermetic Scroll compressors Inverter



Web code:
CYMI



Heating capacity: 5,8÷11,9 kW



**Low consumption Mini-Y NF range
THAIY 105÷111 NF**
Hermetic Scroll compressors



Web code:
MYNF



Heating capacity: 8,7÷19,1 kW



**Low consumption Compact HT range
THAE 110÷119 H.T.**
Hermetic Scroll compressors



Web code:
COC1



Water/geothermal cooled reversible heat pumps

Heating capacity: 6,5÷13,9 kW



**Low consumption Comby-Flow range
THHEY 105÷112**
Hermetic Scroll compressors



Web code:
C5CF



Heating capacity: 7,2÷34,8 kW



**GEO-Flow DHW range
THHE 106÷230**
Hermetic scroll compressors



Web code:
GFLO



Heating capacity: 17,3÷44,9 kW



**Low consumption Y-Flow range
THHEY 115÷240**
Hermetic Scroll compressors



Web code:
YFL1



EXP: Polyvalent systems

Heating capacity: 17,9÷39,1 kW



**Compact-Y EXP Range
TXAEY 117÷133**
Hermetic Scroll compressors



Web code:
C2Q6



Heating capacity: 6,5÷14,5 kW



**Comby-Flow EXP Range
TXHEY 105÷112**
Hermetic Scroll compressors



Web code:
C2Q4



Systems: Rhoss solutions

SOLUTIONS WITH HEAT PUMPS.

- Heating with radiators.
- Heating/cooling with fan coil units.
- Heating with radiators and/or fan coil units and hot water production. Cooling possibility with the fan coil units.
- Heating with fan coil units and/or radiant panels and hot water production. Cooling possibility with the fan coil units.
- Heating/cooling with fan coil units and/or radiant panels and hot water production.

- Heating with a heat pump in addition to a boiler.

SOLUTIONS WITH POLYVALENT EXP SYSTEMS UNITS.

- Heating/cooling with terminals at a medium/low temperature and hot water.

SOLUTIONS WITH HEAT PUMPS WITH RECOVERY.

- Heating/cooling with terminals at a medium/low temperature and hot water.



Global services and solutions Rhoss Smile Service.



serviceexport@rhoss.it
+39 0432 911588

THE "VALUE" FOR HVAC SYSTEM USERS

Rhoss Smile Service aims to find solutions to your problems, meeting all of your needs regarding air conditioning, heating and air ventilation equipment installed all over the world. Rhoss Smile Service creates service programmes and instruments that makes it possible for us to always serve you better.

Which are the most significant added value aspects for a HVAC system user?

1. obtaining constant performance without problems or concerns
2. optimising equipment operation
3. minimising energy consumption
4. keeping maintenance costs low
5. eliminating operational losses
6. limiting inactive times
7. foreseeable cost management
8. compliance with local governmental and environmental regulations

RHOSS SMILE SERVICE CONTRACTS - WARRANTY EXTENSION

Extended warranties are possible for all Rhoss units, which include labour and replacement parts for parts that are defective during the preselected extension period. Warranty coverage requires the execution of all ordinary maintenance operations through the **scheduled maintenance contacts (Basic, Program, Full Service and Global)** in order to satisfy your needs, your company and your application. **They are designed to offer operative efficiency, extend the useful life of your system and help reduce operational costs.** Selecting a Rhoss Smile Service contract is an antistress strategy.

The advantages of purchasing a Rhoss Smile Service contract are unquestionable: in addition to having greater response priority, maintenance and component coverage, customers who sign a contract have the advantage of efficient planning and money savings. In fact, **with a service contract administrative costs and internal and external labour costs are reduced substantially, and provide operational cost savings. The longer the contract, the more you save. Rhoss Smile Service contracts can be signed for a period of up to 10 years.**

MACHINE FOR TEMPORARY USE - RENTING

The right machine at the right moment and for the necessary amount of time: Rhoss Smile Service also means medium and long term renting of air conditioning and heating equipment.

Rhoss Smile Service offers a wide range of versatile machines that can satisfy all cooling needs with an **"all inclusive" formula. The supply foresees a turn-key rental, quick and timely coverage of any risk connected to maintenance and operating costs.**

The fixed rates represent certain costs that simplify accounting and a company's financial forecasts with rental fees being considered "operational costs" and therefore fully deductible. **Customers can add to or replace their equipment at any moment with a fee adjustment.**

The main field of use are ice rinks (specific machines for working at low temperatures) and machines for the wine sector.

EXTRAORDINARY MAINTENANCE - UNIT RE-ASSEMBLY

Increasingly often, architectural barriers and structural constraints make it impossible to replace units in areas that are difficult to reach due to weights and dimensions that do not conform with the available spaces. **Rhoss Smile Service has a team of specialised technicians who are able to perform on site disassembly and reassembly operations for the machine to be positioned.** If units not covered by Rhoss Smile Service contracts and no longer in the warranty period have defective vital machine components, the Rhoss Smile Service team is able to accept any request for service and will quickly organise: **a technical inspection, preparation of a repair estimate, repair service following approval of the estimate, 12 months warranty on the work that was performed and reactivation of the global warranty for an additional 6 months starting from the date the work was completed.**



Renting
"all inclusive"



2012-2013



K17018EN 3000 - Stampa: Grafiche Vianello



PRODUCT RANGE



RHOSS S.P.A.

Via Oltre Ferrovia, 32 - 33033 Codroipo (UD) - Italy
tel. +39 0432 911611 - fax +39 0432 911600
rhoss@rhoss.it - www.rhoss.it - www.rhoss.com

Commercial offices Italy:

Codroipo (UD)
33033 Via Oltre Ferrovia, 32
tel. +39 0432 911611 - fax +39 0432 911600

Agrate Brianza (MI)

20041 Centro Colleoni - Palazzo Taurus, 1
tel. +39 039 6898394 - fax +39 039 6898395

IR GROUP S.A.S.U.

19, chemin de la Plaine - 69390 Vourles - France
tél. +33 (0)4 72 31 86 31 - fax +33 (0)4 72 31 86 30
exportsales@rhoss.it

RHOSS Deutschland GmbH

Hölzlestraße 23, D-72336 Balingen, OT Engstlatt - Germany
tel. +49 (0)7433 260270 - fax +49 (0)7433 2602720
info@rhoss.de - www.rhoss.de

RHOSS GULF JLT

Jumeirah Lakes Towers, Dubai UAE
e-mail: info@rhossgulf.com



UP TO DATE

The direct link with Rhoss
to promote your business

1. The software can be downloaded from the website www.rhoss.com - RESERVED AREA - Software Rhoss
2. With a simple CLICK you can download the documentation in the desired language
3. The software allows you to maintain a direct line with Rhoss to be always updated, also on news



EUROVENT CERTIFICATION
FOR CHILLERS, HEAT PUMPS
AND FAN COIL UNITS



EUROVENT CERTIFICATION
FOR AIR HANDLING UNITS



ECA CERTIFICATION
FOR CHILLERS



NF PAC CERTIFICATION
FOR HEAT PUMPS